

DECK MACHINERY



**CUSTOM
BUILT**

A deep knowledge of the market
makes a big difference

IBERCISA.

QUALITY OUR COMMITMENT

On a successful course since 1969

Ibercisa is a vertically integrated company, market leader in solutions for marine systems and deck machinery.

Our philosophy is to create long-standing relationships with our customers based on trust and understanding. We spend a significant amount of time studying your requests for future projects because your needs are crucial to us and we aim to work hand in hand with you to build a relationship of mutual trust geared towards your success.

Founded in Vigo (1969) on the north western Galician coast of Spain, Ibercisa has become a world player in the field of marine equipment. Today the company sells its products throughout the five continents.

We hope that this overview of our company services will show you how we can work together to achieve your goals.

Ibercisa,
Board of Directors



Our business

Today, the marine services market offers a vast array of different and often confusing, choices. Over the past 46 years however, Ibercisa has become "winch specialist" par excellence. We concentrate on what we do best which in turn, enables us to help you identify the best equipment for your project.

We are professionally qualified to deliver well-researched, proven solutions and products using our many years of maritime experience to help you make the best choice. By working together from the earliest stages of preliminary design and tailoring equipment to your needs, we are able to guarantee both high quality and cost effectiveness.

Ibercisa has an international profile. The Company is present in over 50 countries, thanks to a global network of agents and highly professional staff.

Our employees are committed to offering an impeccable after-sales service. We aim to give every client our close, personal attention, which is also both knowledgeable and informed about the very latest operating methods and equipment in all the naval sectors; fishing, offshore, oceanography, AHTS, towing, etc.

For further information please contact us at: ibercisa@ibercisa.es

Ongoing service

What we like our clients to feel about us

“That they are always professional and not pushy with sales”

“When dealing with Ibercisa, they feel confident and informed”

“Effective, professional and friendly; they see our staff as members of their team”



Worldwide Players Active on Five Continents

Getting Stronger

Since the early days, Ibercisa has relied on skilled labour. Our workers are an important pillar in the structure of the company, with wide professional expertise.

Machinery is designed hand in hand with our clients, from the original draft of a project until its installation. Ibercisa offers personalised adjustments on its machines for both running conditions and capacities.

Getting Greener

Environmental awareness is an aspect which the Company has integrated into its manufacturing and administrative systems, conscious as we are of the relevance of environmental policies in today's world, and our adherence to legal requisites goes beyond what is demanded of us. Ibercisa has been awarded a Certificate from Lloyd's Register under the rule UNE-ISO 14001:2004 guaranteeing that the Company complies with international specifications in the administration of environmental quality. In this way the Company has included in its daily routine the environmental aspects required of its activity. The ISO 14001 Rule is based on the well known ISO 9001 which has widened its commitment to environmental issues.

Improving our efficiency

Ibercisa has assigned a sizeable budget to update its production systems. The acquisition of machinery is a significant investment for the Company which is intent upon innovation and modernization of all its facilities.

The Company has CNC machinery such as milling machines with 5 shafts, or a lathe connected to the CAD-CAM system in the technical office for greater accuracy of the mechanization processes.

Getting better all the time

Why you should be interested in Ibercisa equipment



TUG & WORK BOATS

Towing Winches
Anchor Towing Winches
Escort Towing Winches
Capstans

ENERGY & OFFSHORE VESSELS

Anchor Handling Towing Winches
Traction and Storage System
Heavy Lift Winches DNV 2.7.3
HPU DNV 2.7.1
ROV Winches
Spooling Operations
Mooring Winches
Anchor Windlasses & Winches
Auxiliary Deck Winches

FISHING

Trawl and Purse Seine Winches
Net Drums
Net Sounder
Auxiliary Deck Winch
Capstans
Anchor Windlasses & Winches

RESEARCH VESSELS

Coring and Deep Sea Winches
CTD and Hydrographic Winches
Traction Winches
Streamer
Piston Corer Bed

DREDGING

Auxiliary Anchor Winches
Fall Pipe Winches
Cargo Winches
Anchor & Mooring Winches
Mooring Winches

CIVIL

Anchor and Mooring Winches
Drydocking Winches

MERCHANT & TRANSPORT

Anchor and Mooring Winches
Capstans
Cargo Winches

NAVY

Anchor and Mooring Winches
Stoppers
Capstans

Our technology

The process begins in our Technical Department, always in close contact with the production processes and with strict adherence to the specific requirements of our customers.



We have made significant investments in technology as well as infrastructural upgrades at Ibercisa. The use of cutting edge technology along the entire value chain is key to our business. From conceptual design of the machinery using 3D modelling to calculation and validation through Finite Element Analysis programs, to the Physical Tests, up to delivery of the final product. This whole production process is carried out at our 9,000 m² facility. Cutting, moulding, welding, heat stress relief, CNC mechanics, surface treatment and machinery assembly; we have control over the entire value chain, including physical stress tests in our testing area, with a tow capacity of up to 400 Tons.



Remote Monitoring

Access to your data anywhere, anytime

All deck machinery is constantly monitored to precisely and reliably control the operations; a multitude of sensors acquire real time data that is stored and processed on board. By using Ibercisa's on-board application, operational data can be accessed in real time from on board.

To get the most out of the data, it is all securely transmitted to a protected server, in which it is further processed in order to extract all the information that it contains.

Thanks to Ibercisa's remote application, all your deck machinery information can be accessed anywhere, anytime. Furthermore, with all the collected data any imaginable solution can be developed, such as maintenance management, load tracking, overload management, alarms and many more.



TUG & WORK BOATS



Hydraulic Escort Winch
Vessel: Xaloc / Owner/Operator: Boluda
Shipyard: Zamakona



Electric Escort Winch
Owner/Operator: Svitzer
Shipyard: Cheoy Lee



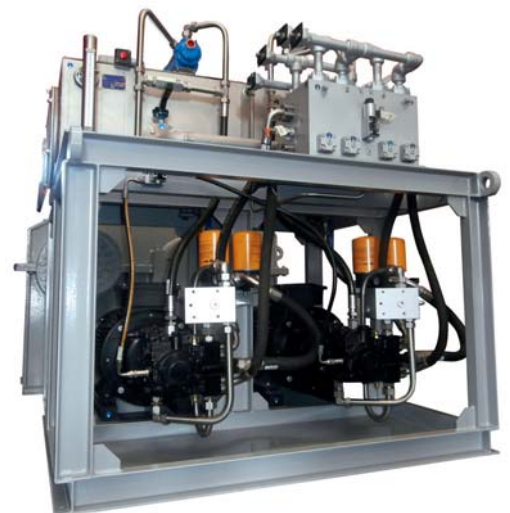
Towing Winch
Owner: Svitzer
Shipyard: Sanmar

REFERENCES /PRODUCTS

More than 400 tugboats
working worldwide

POWER PACK

To drive hydraulic winches and other on-board consumers such as cranes, towing pins, shark jacks, frames, etc., both by means of electro hydraulic group or pumps connected to PTO. We design and issue detailed hydraulic circuits, closed or open circuit, with piping sizes, installation procedures, fluxing requirements, etc.



Ibercisa manufactures winches for Harbour and Escort tugboats with capacity of up to 350 tons direct pull.



14 Units Hydraulic towing winch
Vessel: Cerro Itamut
Owner: Panama Canal Authority
Country: Panamá



TUG & WORK BOATS

Towing Winches
Anchor Towing Winches
Escort Towing Winches
Capstans



Waterfall Type Towing Winch
Owner: Pemex / *Country:* Mexico /
Delivery: 7+9 winches

2018

LATEST ORDERS AND DELIVERIES

Owner/Operator: Starnav (Brasil)

Shipyard: Detroit (Brasil)..... **8 units**

Owner/Operator: Svitzer (TM2 project)

Shipyard: Sanmar (Turkey)..... **4 units**

Owner/Operator: Serport Services Portuaires (Algeria)

Shipyard: Armón (Spain)..... **6 units**

Owner/Operator: Port of Lulea (Sweden)

Shipyard: Gondan (Spain)..... **1 unit**

Owner/Operator: Port Qasim Port Authority (Pakistan)

Shipyard: Uzmar (Turkey) **2 units**

Owner/Operator: Port of Tan Tan (Morocco)

Shipyard: Armón (Spain)..... **1 unit**

Owner/Operator: Fortescue Metals Group (Australia)

Shipyard: Damen (Vietnam)..... **6 units**

Owner/Operator: Lyttelton Port Company (New Zealand)

Shipyard: ASL (Singapore)..... **1 unit**

Owner/Operator: Kotug (The Netherlands)

Shipyard: Cheoy Lee (Hong Kong)..... **2 units**



Render Recovery Winch
Project: Wheatstone, Australia / *Owner:* Svitzer



Anchor Towing Winch
Client: Damen

RENDER RECOVERY WINCHES

Ibercisa's **render-recovery** winches offer a dynamic, reliable and adjustable line tension control, which automatically optimizes both **direct and indirect** towing.

- Safety first, preventing slack wire.
- Wave compensation.
- 2-speed gearbox allows average speed of 210 m/min and line tension up to 150 tons.
- Integrated dynamic brake to work in even harder conditions of speed and force, protecting gearbox and motor.
- Direct and instant information of pull and brake forces.

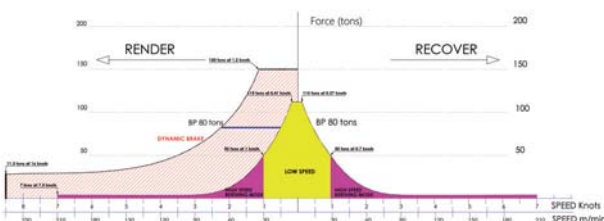


Render Recovery Winch Wheatstone Project
Owner: Svitzer / *Shipyard:* ASL-Singapore

Wheatstone Project

The Danish owner Svitzer has recently ordered a set of 4 render recovery winches and 2 towing winches from Ibercisa for their 4 new tugboats which will be operating at Wheatstone LNG's terminal in Australia.

Cheoy Lee Shipyard (Hong Kong) has recently ordered 4 new electric escort tugs, prepared for indirect towing up to 8 knots.





ENERGY & OFFSHORE VESSELS

Pull-in winch
 Owner: Rigmarine-BP
 Project: Shah Deniz-Stage2

REFERENCES /PRODUCTS

Machinery of up to 600 tons of brake holding capacity

Pull-in winch
 Owner: Rigmarine-Deepeacean
 Project: East Anglia One

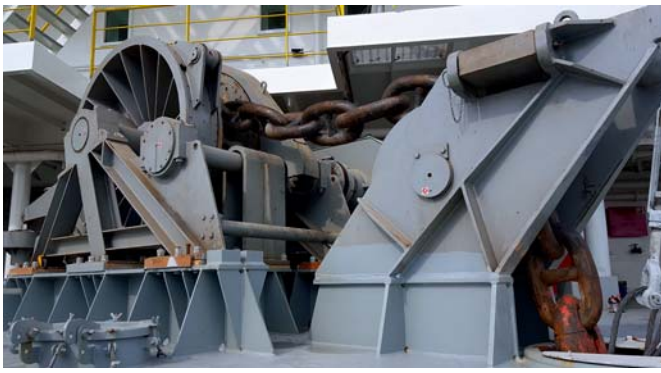
In search of Marine Energy

Recent deliveries include traction machines, stowage and EPU's (Electric Power Units) which operate on a deploying platform for tidal turbine power generators.

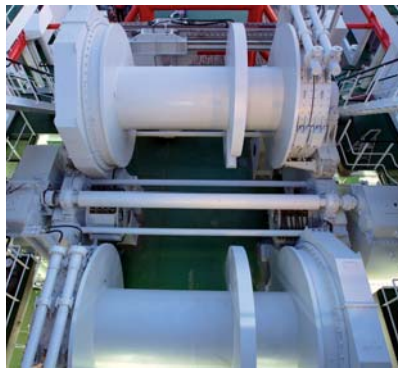


Turbine deployment system
 Vessel: OpenHydro (Naval Group)
 Country: Ireland

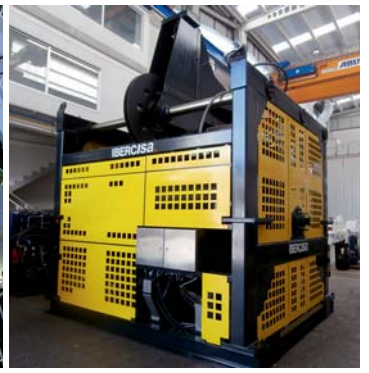
Machines are electrically driven, safe, environmentally friendly and capable of great control during turbine mooring manoeuvres. The machinery is designed with high precision electronic stowage to limit cable spoilage: high security instant "Pawl brake", software controlled dynamic pull control and non-slip traction control. The system is also furnished with three point level control with maximum error range of 50 mm depth among them, technology which allows precise control and total safety.



Anchor Winch
Vessel: DLV2000 / Owner: McDermott
Shipyard: Keppel / Country: USA



**Anchor Handling Towing Winch
350 Tons Electrically Driven**
Vessel: Bylgia / Owner: Heerema Marine
Contractors / Shipyard: Armón



ROV Handling Winch
Owner: McDermott

Ibercisa specializes in the manufacture of large but compact equipment, as seen on the offshore fleet and AHTs (Anchor Handling Towing).

Electrical Drive

Ibercisa invests in the continued development and improvement of drive systems.



By using AFE (Active Front End) technology, we make the most of the energy generated in shooting, returning clean energy to the boat. Our experience spans from the pioneering use of permanent magnet motors on AHTs to the development of our own AHC (Active Heave Compensation) system.



ENERGY & OFFSHORE VESSELS

- Anchor Handling Towing Winches**
- Traction and Storage System**
- Heavy Lift Winches DNV 2.7.3**
- HPU DNV 2.7.1**
- ROV Winches**
- Spooling Operations**



Winches for rental fleet

- Comply with:
- 2.7.3. portable offshore units. Class R60.
 - 222 lifting appliances.
 - ATEX regulations.

Portable Winches

Are designed to be easily transported and installed. In compliance with the most demanding certifications DNV 2.7.3 DNV 2.7.1 DNV 2.22 mark etc.



FISHING

Triple trawl complete electric fishing winch and drive package
Vessel: Northern Osprey III
Owner: MV Osprey Ltd. (Canada)
Shipyard: Tersan



Two-motor net drum design
Vessel: Ruth
Owner: Rederiet Ruth A/S (Denmark)
Shipyard: Karstensens

REFERENCES /PRODUCTS

More than 200 fishing trawlers worldwide are using Ibercisa winches. More than 600 trawl winches and 3,200 fishing winches.



Complete electric fishing winch and drive package
Vessel: Monteferro
Owner: Kalamar Ltd.
Shipyard and Design: Nodosa



Electric Fishing Winches
Vessel: Argos Cies / Owner: Armadora Pereira
Shipyard: Nodosa
Country: Spain



Electric Fishing Winches
Vessel: Østervold / Owner: Knut Inge & Henrik Østervold
Shipyard: Western Marine
Design Office: Sawicon



Twinrig Trawler & Flyshooting
Vessels: Henk Senior CN283 & Jannetje-Cornelis
Owner: Osprey Group BV "De Boer Family" /
Shipyard: Nodosa

Ibercisa originated in the fishing sector. In 1969 it began its activities manufacturing power blocks for purse seining, and thanks to the quality of its products and the improvement in fishing operations, it began to increase its market share in the sector of big trawlers and pelagic vessels.



FISHING

Trawl and Purse Seine Winches
 Net Drums
 Net Sounder

LATEST ORDERS FISHING TRAWLERS



Ocean Choice International (Canada)
 74 m Freezer Trawler - Electric
 Shipyard: Tersan - Shipdesign: Skipsteknisk



Arkhangelsk Trawl Fleet (Russia)
 86 m Fishing Trawler - Electric
 Shipyard: Vyborg - Shipdesign: Skipsteknisk



Pesca Baqueiro (Spain)
 50 m Freezer Trawler (NAFO) - Electric
 Shipyard and Design: Nodosa



M.V. Osprey Ltd. (Canada)
 80 m Factory Trawler - Electric
 Shipyard: Tersan - Shipdesign: Skipsteknisk



Osprey Group, B.V. (Holland)
 2 units. 29 m Fly Shooting - Hydraulic
 Shipyard and Design: Nodosa



Fishermen's Finest (USA)
 80 m Factory Trawler - Electric
 Shipyard: Dakota Creek - Shipdesign: Skipsteknisk



Kutterfisch (Germany)
 2 units. 35 m Trawler - Electric
 Shipyard and Design: Nodosa



Pereira (Falkland Islands)
 74x14m Factory Trawler - Electric
 Shipyard and Design: Nodosa



Tunacor Group Limited (Spain)
 53 m Fishing Trawler - Electric
 Shipyard and Design: Armón

PELAGIC VESSELS WITH IBERCISA COMPLETE WINCH PACKAGE



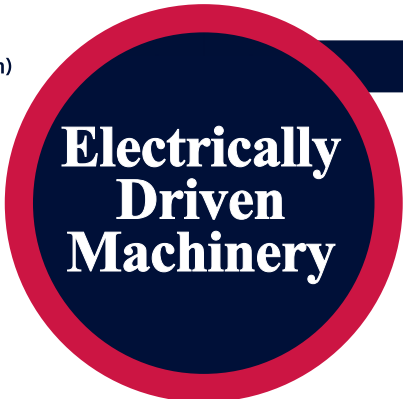
Vessel H. ØSTERVOLD
Shipowners: Knut Inge & Henrik Østervold
Shipyard/Design Office: Western Marine/Sawicon



Vessel RUTH
Shipowner: Rederiet Ruth A/S
Shipyard/Design Office: Karstensens



Vessel BEINUR
Shipowner: Fridalvur Tindskard
Shipyard/Design Office: Karstensens



MAIN ADVANTAGES

- Lower installation costs.
- Lower energy consumption, maintenance and noise levels.
- Higher efficiency.
- Better control than hydraulic systems.
- Environmentally Friendly.

The efficiency of electrically driven machinery is around 85-90%, as opposed to the hydraulic system which is 60%. This gives better control than hydraulic drive, with a variable speed of 0-100% maximum rpm and the whole torque at any speed.

RESEARCH VESSELS



Fishing, research and oceanographic winches
Vessel: BAP Carrasco / Owner: Peruvian Navy
Shipyard: Freire



Fishing, research and oceanographic winches
Vessel: ARC Roncador / Owner: Colombian Maritime Authority / Shipyard: Armón



Fishing, research and oceanographic winches
Vessel: Victor Angelescu / Owner: Inidep
Shipyard: Armón

REFERENCES /PRODUCTS

LATEST ORDERS

Vessel: Taqnia
Owner: Saudi Development and Investment Company
Shipyard: Freire

Vessel: Svea
Owner: Sveriges lantbruksuniversitet, SLU
Shipyard: Armón

Owner: Kuwait Institute for Scientific Research
Shipyard: Freire

Other relevant research vessels

Supplied: Arni Fridriksson-Iceland, Cefas Endeavour-U.K., Miguel Oliver and Sarmiento de Gamboa-Spain, Noruega-Portugal, Cabo de Hornos-Chile, Bipo Inapesca México.



Fishing, research and oceanographic winches
Vessel: Bipo Inapesca / Owner: Inapesca
Shipyard: Armón

Oceanographic winches are provided with a spooling device driven either mechanically from the drum or electronically by an independent electrical moto-reducer. Special attention is paid to the care of electro-mechanical cables.

Ibercisa supplies complete systems including the integration of winches with frame operations. Ibercisa offers the possibility of installing these machines over a rotating base.



Traction unit: Research Vessel NARL- Taiwan



Electric Traction Unit for Shanghai Research Institute



Owner: Kuwait Institute for Scientific Research
Shipyard: Freire

Precise Machinery

The independent units which are installed on board oceanographics can be used on other types of vessels. Adapted for the requirements of scientific teams, the winches have a large cable storage capacity as well as pull to enable them to be used for deep research operations.

Other important features:

- Grooved drums
- Remote control (radio and cable control, control from laboratory and bridge, etc)
- Easy modification of winch parameters: torque, speed, type of cable, automatic payout, etc.
- Wireless access to parameters from land or remote stations: easy to check and correct parameters whilst at sea.



RESEARCH VESSELS

Coring and Deep Sea Winches
CTD and Hydrographic Winches
Traction Winches
Streamer
Piston Corer Bed



“Antartica-1” Project

A state-of-the-art icebreaker for the Chilean Navy.

Complete deck machinery package which apart from oceanographic will also include:

LARS SYSTEM:

- STERN A-FRAME
- LATERAL TELESCOPIC BOOM
- LARS SYSTEM FOR CTD

Owner: Chilean Navy / Shipyard: ASMAR

CIVIL



REFERENCES /PRODUCTS

Ibercisa Deck Machinery's technical office addresses the requirements of civil works.

▲ 26 HPU and winch sets. Up to 100 Ton pull for Valemax class carriers mooring.

**Mooring
guaranteed
with tidal
variations up
to 10m**



Coastal countries' economic strategies are focusing on blue growth, stimulating sea related activity. In recent years we have supplied equipment designed for docks, dykes, exterior piers etc.

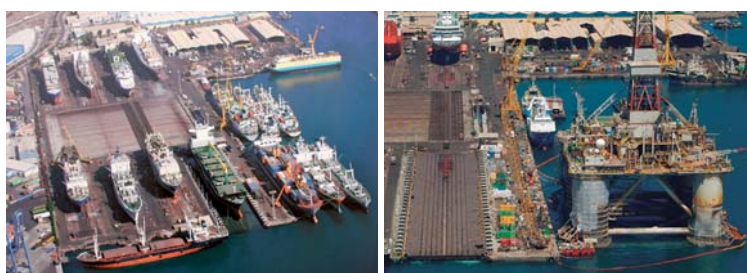


CIVIL

Anchor and Mooring Winches
Dry dock Winches

Dry Docks · Slipways

Ibercisa supplies a variety of machinery for dry docks with a docking capacity of vessels up to 5500 Tons and 120m length.



Dry docks
Owner: Astican / Country: Spain



Dry docks
Owner: Repnaval / Country: Spain



Spooling winch
Owner: Dantrawl / Country: USA



Mooring Winches
Owner: Saudi Aramco / Country: Saudi Arabia



Hydraulic Mooring and Anchor Winches
Submersible Pontoon: Kugira II
Owner: Acciona / Country: Spain



Nature always represents a challenge for civil works

The construction of a 3,5 km bridge over the Rio Negro in Brazil was a huge challenge in terms of maintaining navigation during the rainy season. In order to solve the problem 12 barges were built for installation on the bridges, for which Ibercisa built 24 anchor winches for 64mm diameter chain.

Hydraulic Anchor Winches
Owner: Erin Shipyard
Country: Brazil



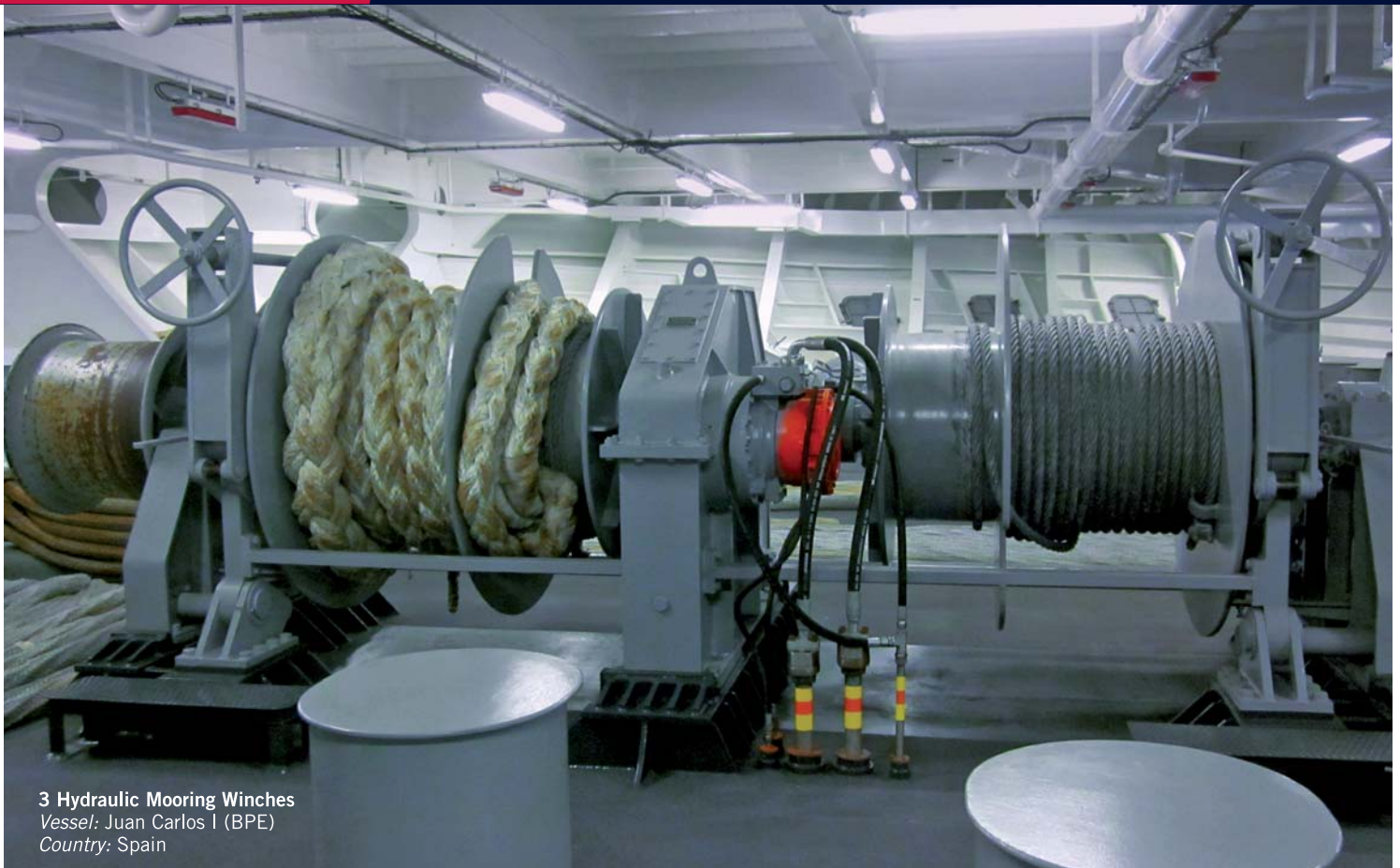
REFERENCES /PRODUCTS

Ins Shakti (AOR Vessel)
Ins Deepak (AOR Vessel)
Indian Navy
Anchor Windlasses &
Mooring Winches

4 Patrol Ships
Iraqi Navy
Anchor Windlass &
Capstans

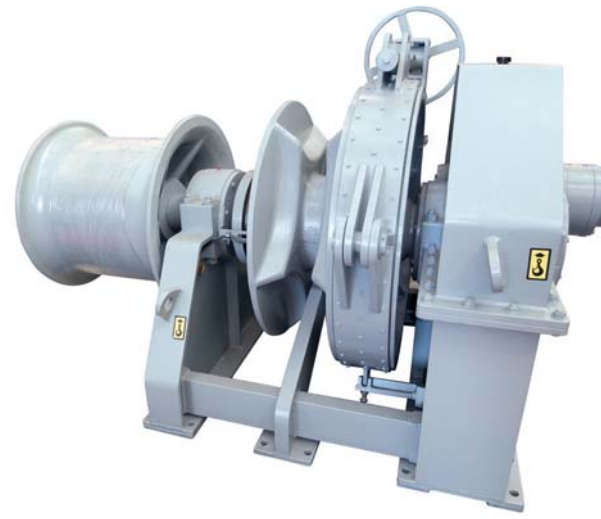
Juan Carlos I (BPE)
Spanish Navy
Anchor Windlasses,
Mooring Winches &
Capstans

Cantabria (BAC)
Spanish Navy
Anchor Windlasses
& Capstans



3 Hydraulic Mooring Winches
Vessel: Juan Carlos I (BPE)
Country: Spain

Navy vessels require versatile, reliable machinery which is also easy to operate and maintain. Machinery approved by the Classification Societies in accordance with the extremely demanding working conditions of Navies.



Hydraulic Windlass
 Vessel: AOR Project (Two vessels)
 Owner: Australian Navy
 Shipyard: Navantia



Electric Capstans
 Vessel: Hobart (AWD)
 Owner: Australian Navy



NAVY

Anchor and Mooring Winches
 Stoppers
 Capstans

Galicia (LPD)
 Spanish Navy
 Anchor Windlasses
 Mooring Winches & Capstans

Canberra and Adelaide (ALHD)
 Australian Navy
 Anchor Windlasses,
 Mooring Winches & Capstans

New AORs
 Australian Navy
 Anchor Windlasses,
 Mooring Winches &
 Capstans

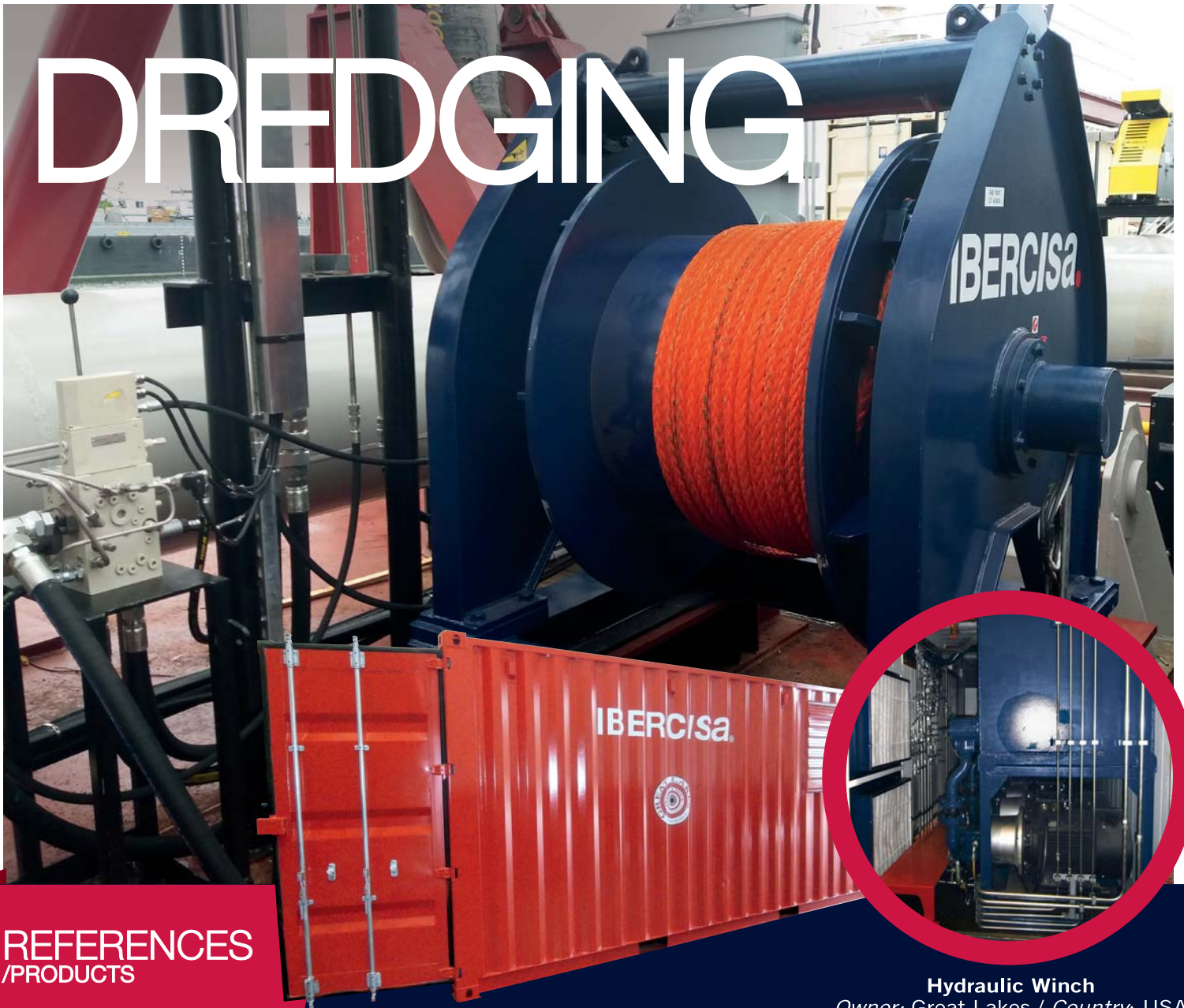
FTI Programme Frigates
 French Navy
 Anchor Windlasses,
 Mooring Winches &
 Capstans

Hobart, Brisbane & Sydney (Hobart class "AWD")
 Australian Navy
 Electric Capstans



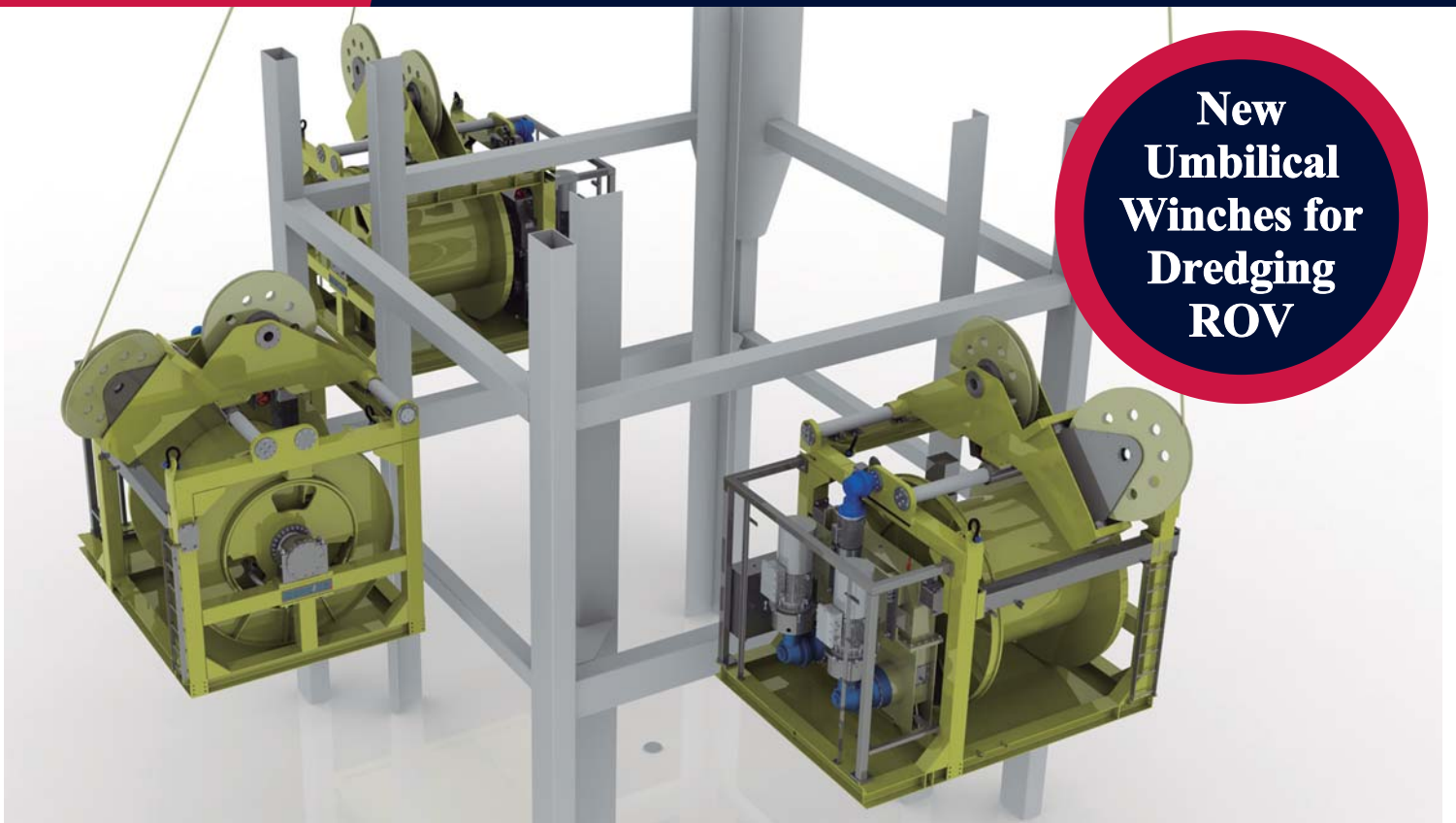
2 Hydraulic Combined Anchor & Mooring Windlass (Chain Ø100 mm)
 Vessel: Canberra (ALHD)
 Country: Australia

DREDGING



REFERENCES
/PRODUCTS

Hydraulic Winch
Owner: Great Lakes / Country: USA



New
Umbilical
Winches for
Dredging
ROV



Auxiliary Winch

Vessel: Willem de Vlamingh / Owner: Jan de Nul
Country: Belgium



Auxiliary Anchor Winch

Vessel: Charles Darwin / Owner: Jan de Nul
Country: Belgium



Anchor Windlasses and Mooring Winches

Vessel: Omvac Diez / Country: Spain

Companies specializing in dredging have entrusted Ibercisa with supplying their equipment. These are highly resistant machines, easy to maintain, and designed to work in the hardest of conditions.



DREDGING

- Auxiliary Anchor Winches
- Fall Pipe Winches
- Cargo Winches
- Anchor & Mooring Winches
- Mooring Winches

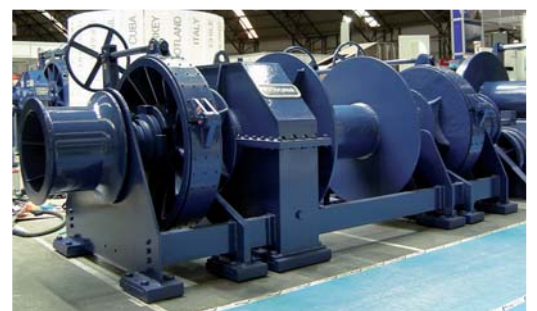


MERCHANT & TRANSPORT

- Anchor and Mooring Winches
- Capstans
- Cargo Winches



Vessel: Magellan Explorer / Owner: Antarctica fly cruises
Shipyard: Asenav (Chile)



Hydraulic combined anchor and mooring windlass Ø44 mm
Hydraulic combined anchor and mooring windlass Ø46 mm
Owner: CHOUEST

MERCHANT & TRANSPORT

Ibercisa offers electric and hydraulic anchor winches for chain diameters of 20 to 120 mm, combined with mooring drums with constant tension, manual or hydraulic clutches, and ATEX Explosion Proof notation.



**Powerful
net drums for
pelagic fishing**

140 t Nominal Pull First Layer
175 t Overload
32 m/min Nominal speed
95 m/min Overload